

Quarantine and You!



snowysauropteryx

Can you lick the science? An abbreviated list.

Genetics: Do not. Unless cheek swabs?

Chemistry: NO!!!!!! DO NOT!!!!!!

Archaeology: Perhaps. But might be human bone.

Geology: Sometimes needed, sometimes dangerous

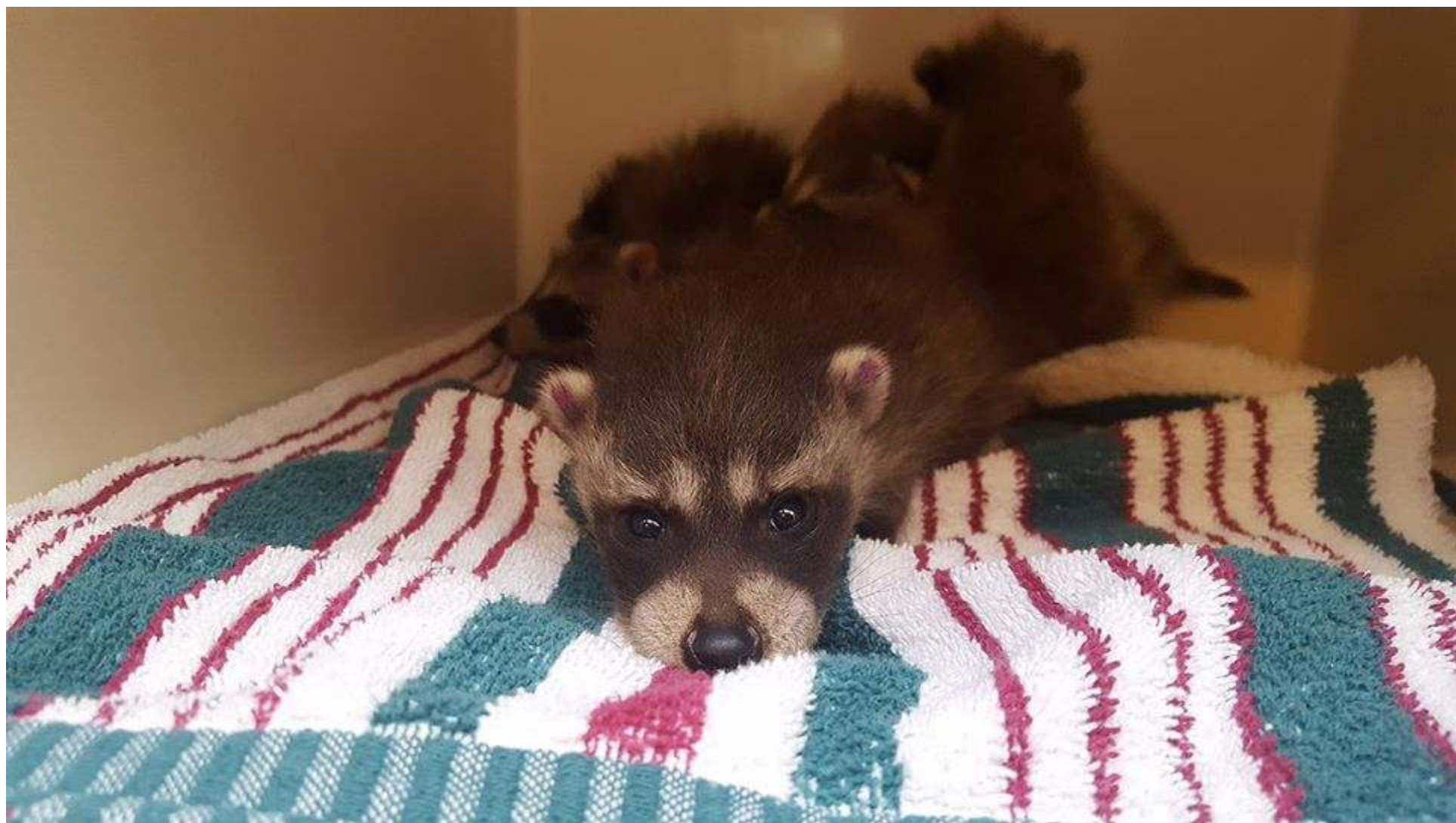
Psychology: Best not.

Physics: ?????????? How???????

Zoology: In zoology, science licks you.

Source: snowysauropt...

29,936 notes



Intake!



- PPE vs. BSI
 - Body substance isolation protects your patient!
- Cross Contamination
 - Try to imagine your patients are covered in black oil. What needs to be cleaned off as you go through?
 - What objects need to be cleaned every use? What objects can you isolate and maintain safe standards? What objects are single use only?
 - How can you position your patients to keep everyday substances isolated?



Let's talk vaccines!



When to vaccinate?

- Follow shelter medicine guidelines!
 - Vaccinate on intake all eyes-opened babies and adults
 - Vaccinate on a 2-4 week schedule CONSISTENTLY until the baby reaches 14-16 weeks or you are no longer able.
 - KEEP RECORDS
 - Vaccination vials have handy stickers that can be used for record keeping!!



When can babies join other litters?

- Distemper incubation from a known exposure can be as long as 5 weeks but is typically 1-2 weeks.
- Parvovirus incubation period is typically 3-5 days.
- We quarantine patients for 10 days post complete rehydration in non-outbreak conditions.

Disinfection starts with a good garden
sprayer!



Bleach:

Contact Time:

10 minutes at 1:30 dilution

Pros:

Easy to obtain!

Inexpensive!

Cons:

Requires pre-clean and post-clean.

Can be very corrosive to caging.

May require significant PPE to use in sprayer.



Virkon S:

Contact time:

10 minutes at 1% solution (one scoop per gallon water)

Pros:

Proven effective against numerous fungi and viruses.

Dry storage – mix it when you need it

Cons:

Requires pre-clean and post-clean.

Relatively short stability time once mixed – Just one week!

Will absolutely stain clothing.



Rescue Disinfectant

Contact time:

5 minutes at 1:16 dilution

Pros:

Relatively stable when mixed – 90 days longevity.

Very safe. No need for significant pre-clean or post-clean for use.

Specific dilutions/contact times provided for conditions.

Cons:

Relatively difficult to acquire in a pinch.

Relatively expensive.



Other ways to clean:

- Steam
 - Distemper is susceptible to temperature of 112F and up
 - We rinse and steam clean our bottles after every feeding
- Fire
 - Propane torches!
 - We “lick” our outdoor caging with flame every season regardless of possible infection



Sources:

- <https://www.uwsheltermedicine.com>
- <https://www.sheltermedicine.com>
- <http://www.pet-informed-veterinary-advice-online.com/>